



PLANNING & ZONING AGENDA

THE PLANNING & ZONING COMMISSION OF SALEM CITY HAS A MEETING SCHEDULED ON WEDNESDAY, JANUARY 12, 2011 AT 7:00 P.M. IN THE CITY OFFICE BUILDING, COUNCIL CHAMBERS LOCATED AT 30 WEST 100 SOUTH. AT THAT TIME THE COMMISSION WILL CONSIDER THE FOLLOWING ITEMS:

1. APPROVE MINUTES OF OCTOBER 13, 2010
2. PUBLIC HEARING
 - A. COLE SCHUTJER / T-MOBILE – REQUEST FOR A CONDITIONAL USE PERMIT TO BUILD A COMMUNICATION TOWER ON THE FOOTHILLS ELEMENTARY PROPERTY LOCATED AT 412 S. 810 E.
3. TRAINING BY ATTORNEY BAKER

THE PUBLIC IS INVITED TO ATTEND

STEVE FAUSETT, CHAIRMAN
PLANNING & ZONING COMMISSION

DATE: 9-5-08

DRAWN BY: TLH (COMLINK LS)

CHECKED BY: ROCKY SCHUTJER

FILE: T-MOBILE/SALEM FOOTHILLS ELEMENTARY

REVISIONS

DATE	DESCRIPTION	INITIALS
9-5-2008	ZONING DRAWINGS	TLH
1-5-2009	CONSTRUCTION DINGS	BBH

NOT VALID UNLESS SIGNED

Mobile

121 W. Election Rd.

Suite 330

Proper, UT 84020

801.860.0086

Fax 801.816.4420

COMLINK LAND SERVICES

860 EAST 4500 SOUTH SUITE 312

SUITE 312

SALT LAKE CITY, UTAH 84107

801-288-4033

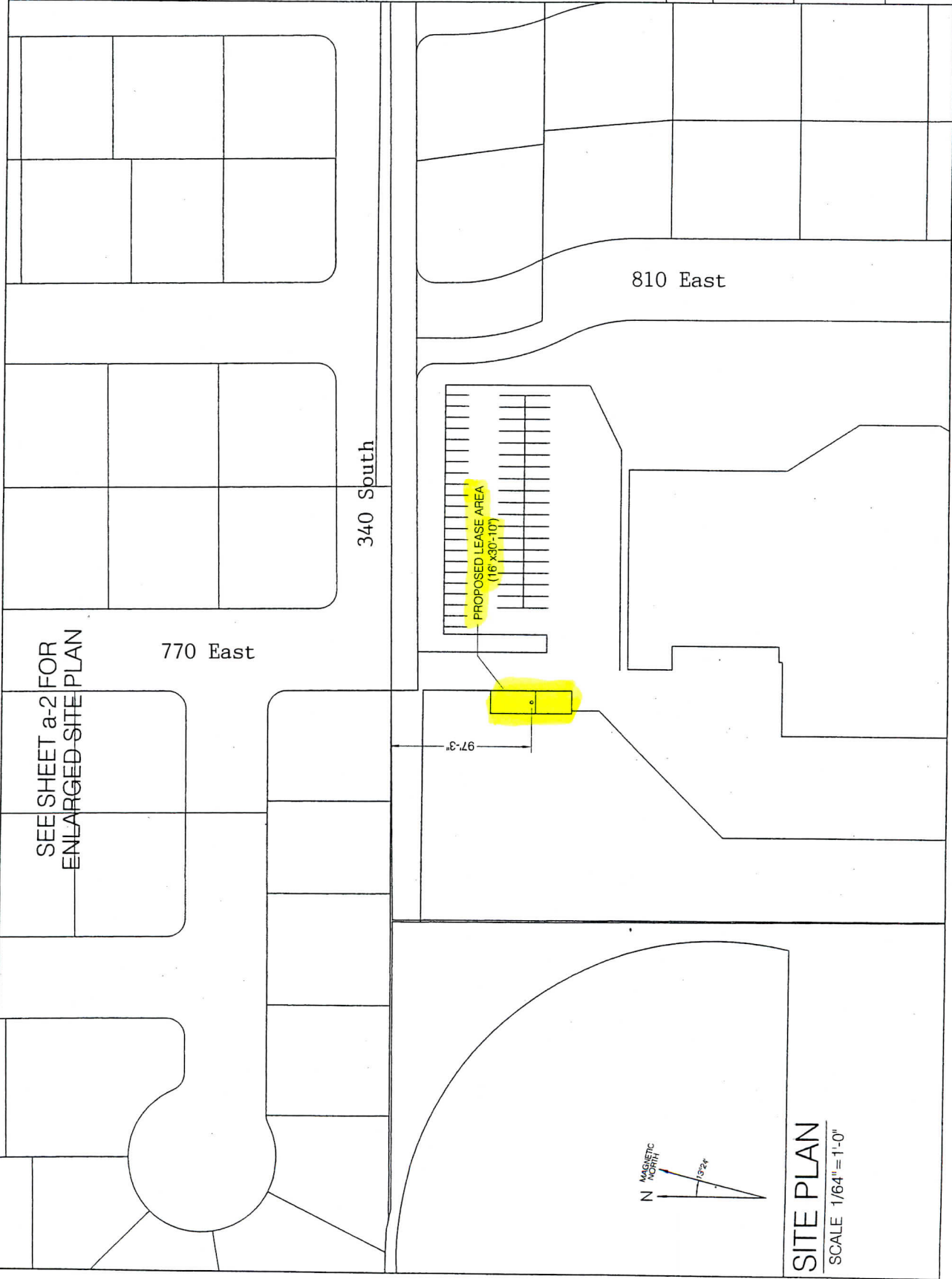
SITE NUMBER:

SL01650

412 SOUTH 810 EAST

SALEM, UT 84653

a-1



DATES 8-03

DRAWN BY T.H. DOUGLAS
CHECKED BY ROBERT SCHULTZ
FILE: T-MOBILE/RAILROAD FOOTING ELEVATION

REVISIONS		
DATE	DESCRIPTION	INITIALS
8-8-03	ZONING CHANGES	T.H.

NOT VALID IN ERS SQUARE

T-Mobile
121 W. Election Rd.
Suite 330
Draper, UT 84020
801.860.0086
Fax 801.816.4420

**GOMLINK
LAND SERVICES**

800 EAST 4000 SOUTH SUITE 312
SUITE 312
SALT LAKE CITY, UTAH 84107
801-289-4083

SITE NUMBER
SL01850
412 SOUTH 810 EAST
SALINA, UT 84059

a-3

CONSTRUCTION PLAN KEYED NOTES

- 1. BASE AREAS ARE REFERRED TO SHEET A-1 FOR ADDITIONAL INFORMATION. (UT 180-017)
- 2. CONCRETE PAD (10'x20'-0")
- 3. PRIMARY BASE TRANSDUCER/ANTENNA (GPS) LOCATION PROVIDED BY T-MOBILE.
- 4. SATELLITE DEMONSTRATION CABLE (GPS) LOCATION TO GPS UNIT, TELEPHONE LOCATION AND ANTENNA LOCATION.
- 5. NEW ANTENNA SUPPORT STRUCTURE FOUNDATION EXISTENCE DOWNS BY OTHERS
- 6. NEW 100' ANTENNA SUPPORT STRUCTURE PROVIDED BY T-MOBILE, SEE T-MOBILE PROJECT MANUAL FOR EXACT TYPE
- 7. GPS ANTENNAS PROVIDED BY T-MOBILE
- 8. CONCRETE CULING TO ANTENNAS PROVIDED BY T-MOBILE
- 9. SEE SHEETS A-1, A-2, A-3 FOR EXACT TYPICAL
- 10. FEDERAL MOUNTED WAVE GUIDE BRACE
- 11. NEW 10' CHAIN LINK FENCE TO SURROUND LULUS AREA PERMETER WITH FRAMING BARS
- 12. WAVE TRANSDUCER CHAIN LINK GATE (TO HAVE EXISTING GATES ON PERMETER)
- 13. EXISTING WITH A MOUNTED MOUNTED CHAIN LINK FENCE WITH 11' FRAME
- 14. GPS ANTENNA PROVIDED BY T-MOBILE
- 15. EXISTING CULING PROVIDED BY T-MOBILE
- 16. NEW BASE AND TOWER FOR FEDERAL

NOTE:
VERIFY WITH PLANNING AND ZONING APPROVALS AND FINAL SITE CONFIGURATION SHEET FROM R.F. ENGINEER.

